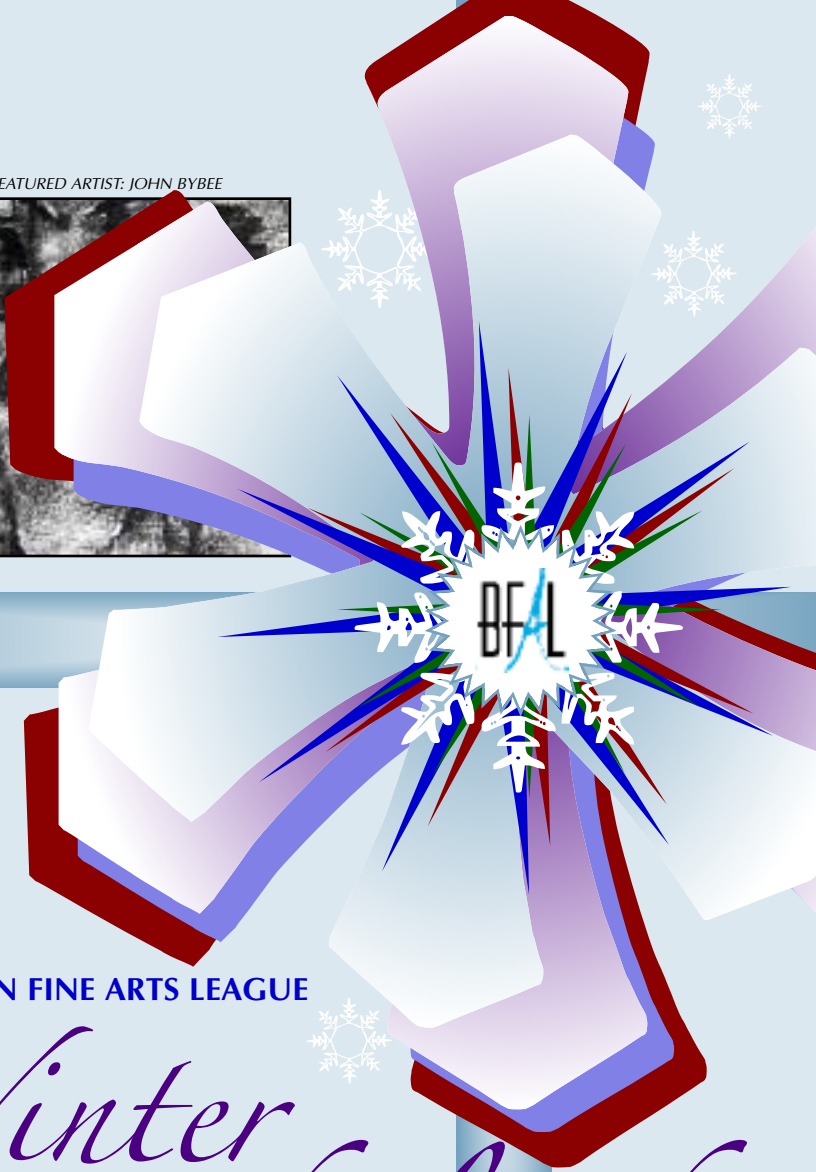
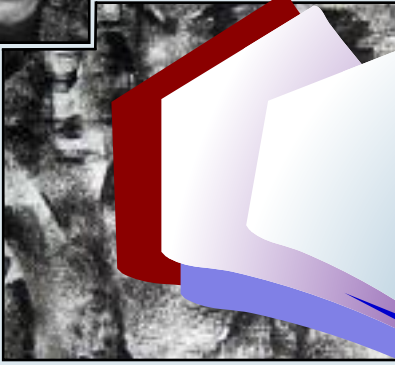




FEATURED ARTIST: JOHN BYBEE



GALA 2010
BURLINGTON FINE ARTS LEAGUE

*Winter
Wonderland*

SATURDAY * NOVEMBER 13
PZAZZ EVENT CENTER



**RAFFLE TICKETS
ONLY \$20 EACH!**
Available from any
BFAL member and
at GALA on
November 13.

Create your own Winter Wonderland!

The winning Burlington Fine Arts League GALA raffle ticket could be your ticket to cruise epic, majestic, and unspoiled Alaska, a place most people only dream of visiting! You choose the itinerary, but your journey could include:*

- * Anchorage * College Fjord in Prince William Sound *
- * Copper River * Denali National Park *
- * Dog sledding * Fairbanks * Glacier Bay National Park *
- * Helicopter Glacier Trek * Hubbard Glacier *
- * Juneau * Ketchikan * Mount McKinley *
- * Prudhoe Bay * Skagway * Tracy Arm Fjord *
- * White Pass Scenic Railway *

Enjoy a voyage that introduces you to the 49th state's uniquely individualistic people, history, lifestyle, and culture with enjoyable stops in colorful frontier towns along Alaska's Inside Passage.

***Winner will develop their own itinerary with the assistance of Burlington's Let's Travel.**

Actual value of winning raffle ticket is a \$3,500 allowance for any destination, which must be used by Nov. 13, 2011.

Drawing will take place immediately following live auction at GALA 2010; winner need not be present.

Note that Alaska cruise season runs from May through September.








GALA 2010
BURLINGTON FINE ARTS LEAGUE


Winter Wonderland



Saturday, November 13
Pzazz Event Center, 3001 Winegard Drive, Burlington, Iowa



-  Music and entertainment.
-  Silent auction starts at 6:00 p.m.
-  Live auction starts at 7:30 p.m.
-  Complimentary hors d'oeuvres, coffee, and tea all evening.
Complimentary wine, beer, and soft drinks from 6:00 to 8:00 p.m.
Cash bar available.
-  Dancing with DJ Brian Japsen immediately following live auction until 11:30 p.m.
-  GALA admission tickets available from any BFAL member and at many area businesses. Individual tickets \$50 in advance, \$60 at the door.
Estimated value of goods and services ticket holder will receive at GALA is \$30.
-  More info at www.burlingtonfineartsleague.com.



4	THE BURLINGTON FINE ARTS LEAGUE
5	<i>Major and special project recipients</i>
5	<i>Individual scholarship recipients</i>
6	<i>BFAL membership</i>
8	DONORS TO GALA 2010
9	A DAY OF SHOPPING
10	FEATURED ARTIST: JOHN BYBEE
12	<i>Auction guidelines</i>
13	SILENT AUCTION ITEMS
18	LIVE AUCTION ITEMS

THE BURLINGTON FINE ARTS LEAGUE



The Burlington Fine Arts League is organized to support and promote the arts in Des Moines County. We provide financial support through scholarships to individuals and by contributions to arts-related projects of local organizations.

It is the expressed mission of BFAL members to insure the arts for the future of our community through our personal involvement and financial support of area arts-related organizations, thereby assuring the preservation of the arts and history of the past.

Our major fundraiser is our annual GALA — the Grand Auction for the Living Arts — an elegant auction that initiates the holiday season with flair. The evening begins with a silent auction and proceeds with a live auction. Those who attend in their finery have the opportunity to bid on items and packages that might include trips, antiques, furs, condo vacations, parties, decorating, landscaping, cashmere, boat trips, exceptional art work, jewelry, and much more. It is an evening for being with friends, old and new. Bidding and winning, wining and dining combine to provide a fun-filled, festive evening that is a benefit to all who support the arts in our area.

One hundred percent of the money raised at GALA is donated back to the community: forty percent is given as individual scholarships, fifty percent goes to local organizations for major projects, and ten percent is allocated for smaller, special-request projects.

In 2009, BFAL raised just over \$50,000 at GALA. Approximately \$20,000 of that has been awarded as scholarships to students from Des Moines County, and BFAL contributed nearly \$25,000 to arts-related organizations, events, and school activities.

The Burlington Fine Arts League takes great pride in investing in our community's efforts to maintain and expand the arts.

MAJOR AND SPECIAL PROJECT RECIPIENTS

Art Guild of Burlington
 Bel Canto Chorale
 Burlington Area Arts Council
 Burlington Area Community YMCA-YWCA
 Burlington Civic Music
 Burlington Community High School Art Department
 Burlington Community High School Band Program
 Burlington Community Middle Schools Orchestra
 Burlington Municipal Band
 Burlington Public Library
 Burlington Steamboat Days: Art in the Port
 Corse Elementary School
 Downtown Partners, Inc.
 Great River Christian School
 Hope Haven Area Development Corporation
 James Madison Middle School Band
 Leopold Heritage Group
 Meet the Masters
 Notre Dame School Art Department
 Notre Dame School Band
 Oak Street Middle School Band
 Players' Workshop, Inc.
 SCC DiDante Literature and Writing Club
 Small World Preschool
 Society of Great River Poets
 Southeast Iowa Artists' Studio Tour
 Southeast Iowa Symphony Orchestra
 Southeastern Community College: *Fiddler on the Roof*
 Sunnyside Elementary School
 Violin Master Class: Katie Hoth

INDIVIDUAL SCHOLARSHIP RECIPIENTS

Corwin Brown*, Zachary Champion*, Corey Cox, Dylan Diewold*, Collin Fairlie*, Megan Fullenkamp, Jaime Giannettino*, Jennifer Glaser, Morgan Griffin, Lauren Hayes, Victoria Jacobsen, Matt Landon, Carmen Lloyd, Christopher Lloyd*, Daniel McCreight*, Alisha Orth, Amy Pirtle, Savanna Quam*, Autumn Rosario, Brady Schach, Julie Seibert, Clayton Tillotson.

**New scholarship recipient in 2010.*

ACTIVE MEMBERS

Michelle AbouAssaly*: BFAL past president, GALA business donations; **Khensa Bangert**; **Deb Beach***: GALA general (co-chair); **Mitty Billups**: GALA brochure; **Crystal Bivens***: GALA business donations (co-chair); **Wendy Bowen***: GALA business donations (co-chair); **Amanda Brent***; **Annette Bybee**: GALA special items; **Kristen Christ***: GALA member donations; **Monika Coursey**: GALA auction (co-chair); **Gina Crabtree***: GALA auction (co-chair); **Jan Daft***: GALA auction; **Marianne Darnall***: GALA art (chair); **Jeanne Deery***: GALA business donations; **Lori Denney**: GALA general (advisor); **Ann Distelhorst**: GALA brochure (chair); **Virginia Dupuis***; **Karine Elkhoury**; **Teresa Engler***; **Ann Reynolds Erts***: BFAL president, GALA publicity (chair); **Lindsay Fruehling***: GALA art; **Cathleen Gordon***: GALA decorations; **Tammy Hayes***: GALA tickets (co-chair); **Sara Hecox***: GALA decorations (co-chair); **Debbie Jochims***: GALA raffle (chair); **Terry Johnson***: BFAL treasurer, GALA cashier, GALA tickets (advisor); **Mary Ann Jordahl**: GALA associate donations (co-chair); **Colette King**: BFAL secretary, GALA associate donations; **Jennifer Klever-Kirkman**; **Kim Korschgen***: GALA decorations (co-chair); **Cheryl Krogull**; **Stephie Libben***: GALA general (co-chair); **Tina Lowell**: GALA auction (co-chair); **Marie Delaney Luttenegger***; **Connie McManis**; **Barbara McRoberts**: GALA business donations, GALA thank-you (co-chair); **Rhonda Miller***: GALA tickets; **Lynda Murray**: GALA coat check (chair); **Sabrina Paiva**: GALA business monetary donations (chair); **Nancy Paul***; **Ann Peters***: BFAL corresponding secretary, GALA business donations; **Christy Pfeifer**: GALA decorations; **Susan Ploeger**: GALA tickets (advisor); **Leiah Prall**; **Kathy Rashid**: GALA coat check (chair); **Liz Rich**: GALA auction; **Linda Riley**: GALA thank-yous (co-chair); **Becky Rump***: GALA general (advisor); **Mary Saxton**: GALA associate donations (co-chair); **Pam Schmeiser**: GALA decorations; **Sara Schultz**; **Becky Sherwood**: GALA decorations; **Judy Shotwell***; **Jennifer Skelley***: GALA member donations (chair); **Soila Skerik**; **Suzanne Sorensen***: GALA special items; **Susan Tjaden***: GALA special items (chair); **Lori Upton***: GALA decorations (advisor); **Cindy Vavroch***: GALA tickets (co-chair); **Lisa Walsh***: GALA art; **Jan Wolbers***: GALA publicity; **Nina Zaiser***: GALA general (co-chair).

BFAL officers and 2010 GALA committee chairs and members are noted. An asterisk () indicates the member made a donation of a live auction or silent auction item in support of GALA 2010; other members made monetary donations.*

ASSOCIATE MEMBERS

Jerrolyn Allen*, **Mary Ann Baker***, **Bonnie Baldwin**, **Cynthia Becker***, **Carol Benne***, **Debbie Bessine***, **Marianna Brinck**, **Pam Broeker***, **Janelle Brown**, **Liz Buhmeyer***; **Joan Burkert***, **Ginny Burrus***, **Lois Clark***, **Betty Cooper***, **Patricia Crabtree***, **Pam Daws***, **Gretchen Delaney***, **Sally Derby**, **Kay Ditto**, **Anita Fleming***, **Ellen Francis***, **Ruth Gaudian***, **Mary Ann Grinde***, **Nelly Gundrum***, **Judy Haar***, **Margaret Hansen***, **Karen Hassel***, **Dawn Hazell***, **Sandra Heagle***, **Jill Henrich***, **Deb Jameson***, **Mindy Johnson***, **Val Lazar**, **Mary Livengood***, **Sharon Marshall***, **Caroline Massner**, **Margaret Matsch***, **Janet McCannon***, **Marty Milani***, **Gretchen Miller***, **Susan Moss**, **Bobbie Peterson***, **Carol Peugh***, **Linda Phillips***, **Joanne Prugh***, **Mary Rapp**, **Yongei Reif***, **Lois Rigdon***, **Kaye Sladky***, **Margaret Steinle***.

An asterisk () indicates the associate member made a donation of a live or silent auction item or made a monetary donation in support of GALA 2010.*

Any member of the Burlington Fine Arts League who has been an active and contributing member in good standing for at least five years may request a change to associate member status.



DONORS TO GALA 2010

The Burlington Fine Arts League very gratefully acknowledges these donors, who made major contributions towards the success of GALA 2010.

Diamond Donor (\$1,000 or more)

Winegard Foundation

Gold Donors (\$500 to \$999)

**Great River Medical Center
Great River Women's Health
Two Rivers
Valley Distribution Corp.**

Silver Donors (\$100 to \$499)

**J&J Steel, Inc.
Lunning Chapel, Inc.
Preferred Products Corporation
Prugh Funeral Service
Re/Max Real Estate Specialists
Teresa Salino-Hugg, DDS, MS, PC
US Bank
Zaiser's Landscaping Inc.**

Bronze Donors (to \$99)

**Timothy J. Bockenstedt, DDS
Carter Chiropractic Clinic**

The Burlington Fine Arts League gratefully acknowledges these donors who made significant gifts of equipment or services for GALA 2010.

**DFI and Richard H. Benne, Fleck Sales,
Formalities, Golden Eagle Distributing
Corporation, The Hawk Eye, Brian Japsen II,
KKMI Radio, Melissa's, Menke-Hoyer Auction &
Realty, Pritchard Broadcasting/KBUR/KGRS,
Pzazz Event Center, Terry Reis, SCC Print Shop,
Sherwood Company, TalkRadio KCPS.**





CALLING
ALL LADIES!

BURLINGTON FINE ARTS LEAGUE PRESENTS

a day of shopping in Schaumburg!

SATURDAY, DECEMBER 4
WOODFIELD MALL

*Come with us on a ladies' shopping trip to Woodfield Mall in Schaumburg, Illinois! Complete all your holiday shopping at over 300 national and local stores, such as **Nordstorm, Anthropologie, Apple, and Disney.***

* \$75 fee includes light breakfast, snacks, beverages, and goody bags. * Fee is payable the night of GALA by bid number. * Bus leaves Westland Mall in West Burlington at 6:00 a.m. sharp on December 4 and returns at approximately 11:00 p.m. * Transportation provided by Trailways Bus Lines. * 45 capacity maximum — it's first-come, first-served! * For more information, contact **Monika Coursey** or **Jeanne Deery.** *

This year's featured GALA artist is John Bybee. Two of his works — one a drawing, the other a ceramic bowl — will be auctioned.



John Bybee

John Bybee has been a member of the art faculty at Southeastern Community College since the fall of 2000. He had previously been an adjunct professor at Lincoln University in Jefferson City, Missouri. He earned a master of fine arts degree in painting and drawing from the Pennsylvania Academy of Fine Arts in 1996.

His work has been included in numerous exhibitions in the United States, including shows at the Vox Populi gallery in Philadelphia, Pennsylvania; the Swope Art Museum, Terre Haute, Indiana; and the St. Louis Artists' Guild in St. Louis, Missouri. His works are in many private and corporate collections, including those of Emerson Electric, Sun Corporation, and the University of Missouri.

Bybee and his wife, Annette Bybee, live in rural Des Moines County with their son, Isaac.



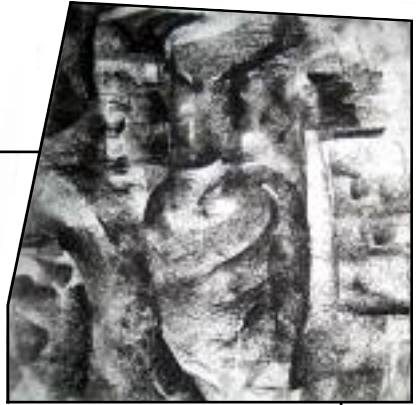
LIVE AUCTION ITEM 11

Beautiful as well as functional, Bybee's **ceramic bowl** is 5.25 inches tall and 12.75 inches diameter. Strong horizontal lines evince the hand of the artist on this wheel-thrown bowl. Glaze colors include multiple colors of brown, ranging from tan to nearly black, as well as blue tones. The artist's incised signature appears in the unglazed area under the bowl.

LIVE AUCTION ITEM 1

Shards

Five-sided charcoal drawing on Arches 88 paper, 10 inches high and 9 inches wide. Piece includes larger five-sided frame constructed by the artist.



Bybee says his abstract “Derivation” series, which was executed between 2004 through 2006 and includes *Shards*, “helped me understand how to connect what was happening in my personal life to my work. Abstraction more clearly reflected what I was going through during a time when I could only see pieces and parts of the world.”

Not surprisingly, his work — as well as his life — was affected by the death of his first wife, Naomi Eigner-Bybee, in 2002. He says her passing “changed my understanding of the presence of a person. I started looking at other things that seemed out of place or out of context — for example, some gravel thrown onto a pile of ice in winter.” Long after the snowplow has passed and the ice at the side of the road has melted, the displaced gravel remains, still out of place.

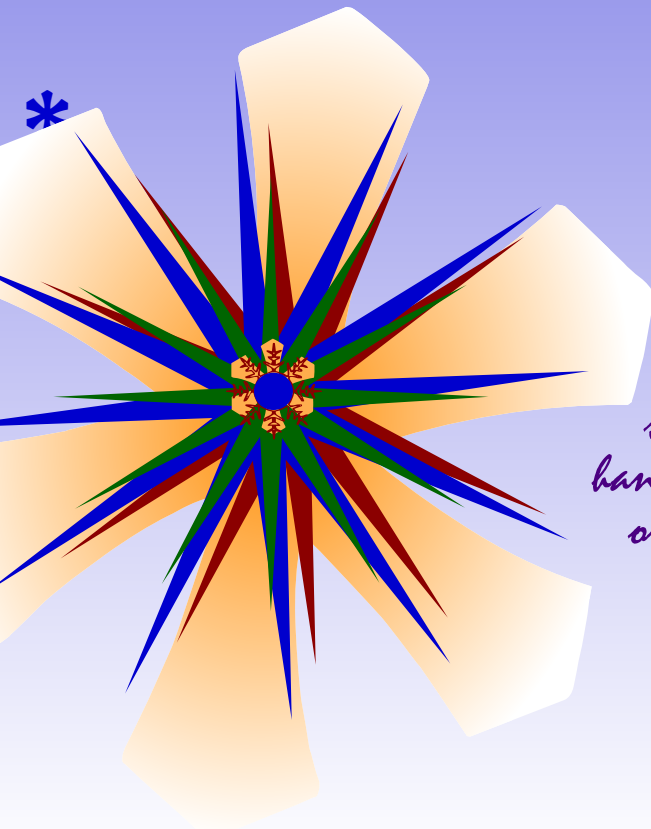
*“While the lines
and marks on the
surface connect, they
may not be
connected to reality.*

*They become
elements out of
context...fractions of
images. In that sense,
the work creates its
own presence.”*

— John Bybee

auction guidelines

- * The silent auction — along with the cocktail hour — begins at 6:00 p.m., with staggered closings shortly before the end of the live auction.
- * The live auction begins at 7:30 p.m. Bidders for the live auction should get an auction number from the auctioneer table before the live auction begins.
- * Please pay for your purchases as soon as possible after the close of the live auction. Payments in cash or by check are preferred. We also accept payment with Visa or Mastercard. Payment is to be made at the auctioneer table where you received your auction number.
- * Please remove your purchases as soon as possible after the auction. The Burlington Fine Arts League is not responsible for damage or loss of any items not removed at the end of the live auction.
- * All sales are final! No substitutions or exchanges are allowed, except as authorized by the donor.



Don't miss our special selection of hand-painted holiday ornaments at GALA on November 13!

SILENT AUCTION ITEMS

The silent auction begins at 6:00 p.m., with staggered closings. Winning bids will be posted shortly before the end of the live auction. Payments in cash or by check are preferred, but we also gladly accept payment with Visa or Mastercard.

1 Create holiday heirlooms with these very special, limited edition **“Twelve Days of Christmas” ornaments** by Waterford Crystal. Cheerfully donated by **BFAL associate members**.

2 Explore your child’s creativity indoors with a one-semester class at **Kinder-musik** with Janice Gibson. Then let your child explore outside, riding a tricycle donated by **Bickel’s Cycling and Fitness**.

3 Treat yourself once a month for a year to **lunch at the Ivy Bake Shoppe** in West Burlington or Fort Madison. Enjoy scrumptious sandwiches, wraps, soups, and tempting desserts.

4 Want to join a band or just play for fun? **Mundt’s Piano and Organ** has donated this **guitar** for your musical pleasure.

5 For the basketball fan in your family, **Southeastern Community College** donates two **men’s basketball season passes**. Enjoy the game, then it’s off to **Gator’s for a late-night bite** with your \$25 gift certificate.

6 Want a little **in-town getaway**? Grab some friends and relax by the pool at **Comfort Suites**. The package includes two deluxe suites with breakfast included. Also, enjoy lunch for six at **Peaches Restaurant**.

7 This fabulous pair of sterling silver, designer-style door-knocker **earrings** will complement virtually any outfit with a bold dash of panache. Stylishly donated by **Sharon Marshall**.

8 Adorn your home with this large **apothecary jar** filled with decorative items, donated by **The Nest** near Sperry.

9 Kick off your Steamboat Days week with a pre-party at **Mr. Moto’s**, where you’ll enjoy a **bucket of beer**. Then enjoy Burlington’s annual festival of American music with weeklong **Steamboat Days tickets for two**.

10 Whether they’re red or white, sweet or dry, have fun trying an assortment of wines at **The Drake**. This wine tasting for twelve will include **delicious appetizers and ten wines** of the restaurant’s choosing.

11

How much is that doggie in the window? Priceless! Adopt an animal of your choice at the **Des Moines County Humane Society** animal shelter. Welcome your new pet with a bag of food from **Allgood Animal Hospital**, gift certificates from **Horse and Hound Country Store** and **Pampered Pooch**, and grooming at **Dog's Day Dog Grooming**. The package includes a discount on spaying or neutering.

12

Hey, ladies! Want to kick off the holiday season with a new look? Pamper yourself with a new **cut, color, and style from Raze Hair Design** in Burlington. The package also includes an assortment of hair products for you to take home. Continue your pampering with a half-hour **massage at Cool la Vie**, just two doors down.

13

Keep the Iowa winter at bay — with a 100% wool plaid **Pendleton throw** donated by BFAL associate member **Joan Burkert** and with the cheerful flowers you'll purchase using this **\$100 certificate from Ritter's, Inc.**

14

You'll love this beautiful **ceramic bowl**, crafted by British-born, California-based artist Ruth Hyndman, from **M.C. Ginsberg** in Iowa City.

15

Burlington's multi-talented **Kent Strabala** offers a hand-carved wood **duck decoy**. The decoy, finished with a light stain and hand-rubbed tung oil, measures fourteen inches long, six inches high, and six inches wide. Duck blind, Labrador retriever, and rifle are not included.

16

Calling all Hawkeye fans! Proudly hang this framed poster of the **2010 Orange Bowl game** featuring the **University of Iowa** football team. The poster measures 13 x 40 inches and shows a great view of the inside of the stadium as Iowa kicks off at the start of the game. Donated by **The Medium**.

17

What child doesn't love a birthday party! **Fort Madison Putt-Putt and Ice Cream** donates a **party** for ten children. Adorn and enrich the party with balloons, favors, and treats from **Parties Unlimited**.

18

Adorn any wall in your home with this original **Ralph Law watercolor**, judiciously donated by **David Beckman**.

19

Enjoy **dinner at 61 Chop House Grille & Liquid Lounge** in Mediapolis with your certificate for \$100. And the drive is on us, with a **\$50 BP gas card** donated by **BFAL members**.

20

Plan your next party at **Big Muddy's**! You'll get a **gift basket** of wines and cheeses, **appetizers** for 20, and a great chance to enjoy the spectacular Mississippi River view and Muddy's awesome new bar.

21

Take care of your home inside and out: find something eye-catching for the interior of your home with a \$50 gift certificate from **Tattered Parasol**, and spruce up your garden with a \$50 gift certificate from **Zaiser's Florist**.

22 How can you resist this array of craftily **hand-painted silk scarves by Ruth Ann Boyer**? Especially when the artist also offers a **one-day class**, with supplies and lunch included, where you'll paint your own scarf?

23 Have you always wanted to learn to play the piano or perfect your singing? Well, now you can, with ten **piano or voice lessons** with BFAL's very own **Amanda Brent**. Music books will be provided.



24 Pamper yourself with natural **skin care products** from **The Wholesome Basket**. Enjoy a basketful of natural lotions, soaps, lip balm, and sunscreen.

25 From **Marianne Darnall**, an exciting acrylic **abstract painting** that will be sure to appeal to your aesthetically adventurous side.

26 Attention, men! Set the scene with **candles and flowers** you bought with a \$50 gift certificate from **Zaiser's Florist & Greenhouse**, then serve an intimate **dinner for two** that you cooked yourself, complete with filet mignon, baking potato, salad, and wine provided by **Tom's Market**.

27 Time to update your **home decor**? Start with this carefully selected accessory from BFAL associate member **Carol Benne of Designer's Viewpoint**.

28 Need to update that family portrait? **KimAnne Photography** is your source, with a **family portrait session** and twenty-five Christmas cards. Get ready for the occasion, with a \$100 **gift certificate from Burke Cleaners**.

29 See you at the Club! Enjoy a one-year **social membership at the Burlington Golf Club**. This package, donated by BCG, may also be applied to other memberships. A terrific opportunity!

30 Get ready for the holidays with this beautiful festive **floral arrangement** to enhance any home, donated by **Under the Sun** in Fort Madison.

31 Handmade and painted, this colorful Italian **maiolica platter** from the Paesaggio Collection is a beautiful piece! It measures 14.5 inches square and can be used for serving or hung on a wall. Donated by **Lori Upton**.

32 Gazing at Burlington's many lovely church windows as a child inspired local artist **Pat Latty** to pursue a career as a glass artisan. Her offering for GALA 2010 is a beautiful 18 x 18-inch **beveled-glass panel**.

33 Wake up to a Burlington sunrise in "the best nest in the Midwest!" You'll spend one romantic night in the **Squirrel's Nest Bed & Breakfast** pent-house suite, with sparkling wine, a half dozen roses, and gourmet chocolates.

34 Get the party rolling! Come out to **FunCity's KingPins bowling lanes** and enjoy a night of bowling for ten people! Shoe rental, unlimited pitchers of beer or pop, and unlimited pizza are included.

35 This custom-framed 8 x 8-inch **oil painting**, *Glazed Pear* by artist **Anita Lee**, is a beautiful example of the medium she loves to work in most. This lovely piece has been donated by **Ann Reynolds Erts**.

36 For all you Hawkeye fans, the **Des Moines County I-Club** donates a University of **Iowa team football**. Keep it yourself — or give it away and score extra points with your favorite Hawkeye fan.

37 Enjoy this handcrafted **raku ball** from Burlington artist and teacher **Lillian Rubin**. The hollow, ceramic sphere has an incised and glazed mandala design and is 4.5 inches in diameter.



LILLIAN RUBIN (DETAIL)

38 Accessorize with a beautiful **silk scarf** by Hawaiian artist Gwen Arkin. The unique colors were created with a 19th-century photo process that utilizes both cyanotype blue and van dyke brown. Pair it with the wonderful island scent of **pikake jasmine** in a selection of fragrant French-milled soap, foaming mineral salts, and perfume. You're sure to capture the tropical essence of Hawaii! This unique package of made-in-Hawaii items is donated by BFAL members **Ann Peters and Jan Daft**. *Mahalo!*

39 Gather your friends for a night of great **music at The Washington** in downtown Burlington, where you'll sit back and enjoy a few cold ones from your own **pony keg**, generously donated by **Fleck Sales**.

40 Bring out a new you with a series of six medical **microdermabrasion** treatments, compliments of **Cleveland Dermatology**, plus a certificate for \$250 worth of **laser hair removal** from **Burlington Area Family Practice**.

41 This exquisite nightscape **photograph by Ed Minard** is a view looking down Snake Alley. The 11 x 14-inch print was donated by **Bonnie Baldwin at the Iowa Store**.

42 **Styltique** wants to pamper you! Indulge with **spa treatments**: a half-hour massage, Bio-Visage facial, spa manicure, and spa pedicure. Then go out on the town to a **dinner for four at Yong's Pacific Rim Restaurant**.

43 Carlene Dingman Atwater, a Fort Madison artist, uses soft blues and peaches to draw a **pastel landscape** that highlights natural foliage after a winter snowstorm. Donated by **Virginia Dupuis**.

44 Wrap yourself up in this beautiful white **ermine fur throw**, so warmly donated by **Windowscapes**.

- 45** This acrylic **painting** was a joint effort by **Dawn and George**, two artists who live at Hope Haven. It depicts three silhouettes lying on the grass, imagining clouds above as recognizable shapes.



DAWN AND GEORGE

- 46** Fort Madison artist **Jim Knapp** donates an **ink-and-watercolor drawing**, depicting a Burlington landscape with particular historic significance.

- 47** Make it an occasion with this **fabulous basket** filled with wine, glasses, a variety of wine accessories, and napkins, all donated by **Clara's Garden** in Mediapolis.

- 48** Donated by photographer and BFAL associate member **Liz Buhmeyer**, this **photograph** of a sunset at the Port of Saint Joseph — in northwest Florida on the Gulf of Mexico — was taken a few years ago, “when things were pristine.”



LIZ BUHMEYER

- 49** Maybe you have an anniversary, family reunion, or other special occasion coming up? You'll be able to make good use of a certificate for a **family portrait from National Studio** as well as the flowers you'll get with a **\$50 certificate from Burlington in Bloom**.

- 50** For that person who's difficult to shop for, stop by **Nature's Corner** on Jefferson Street to pick up a beautiful **holiday basket** — the perfect gift! Then pop into **Original Cyns** for a Sergio Gutierrez **bracelet**.

- 51** Tempt your taste buds and challenge your culinary skills! Grab five of your friends for some fabulous **cooking** presented by chef Patti Myers of the **Olde World Café** in uptown Mediapolis.

- 52** Here's one for all you **music** lovers! This musical ensemble includes one family season ticket to the **Southeast Iowa Symphony**, two season tickets to **Players Workshop**, and two general admission tickets for **Burlington Civic Music**. Before the show, enjoy dinner with your \$100 gift certificate from **Martini's**.

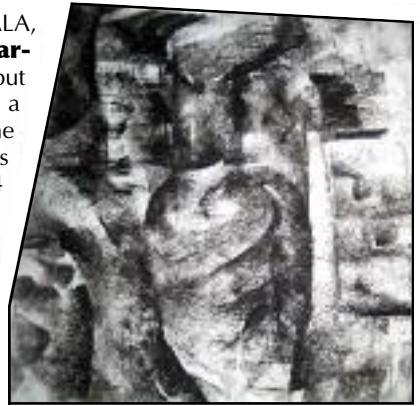
- 53** This **landscape painting** by retired elementary teacher and largely self-taught artist **Barbara Cave** is a charming sight. Her depiction of a rural Iowa scene is an oil-on-canvas work and measures 14 x 26 inches.

LIVE AUCTION ITEMS

The live auction begins at 7:30 p.m. Bidders should get an auction number from the auctioneer table before it begins. Payments in cash or by check are preferred. We also accept payment with Visa or Mastercard.

1

BFAL's featured artist for our 2010 GALA, **John Bybee**, offers an exquisite **charcoal drawing**. Physically small but emotionally powerful, *Shards* has a unique five-sided shape. It's part of the artist's "Derivation" series of works that were executed between 2004 and 2006. The item includes a backing mat and a frame that Bybee constructed himself. See pages 10 and 11 for more about the artist.



JOHN BYBEE

2

Ensure your **VIP treatment for GALA 2011**. The top bidder will receive an upgraded GALA table for eight, front and center with champagne and custom-made bidding paddles by Burlington artist **John Bybee**. Also included are tickets to local events and a Gala goody bag. The winning bidder will even get to adorn the party with jewelry of their choice, on loan, from Becker's Jewelers. Donated by **Kristen Christ, Teresa Engler, Suzanne Sorenson, and Susan Tjaden**.

3

Cathleen Gordon's Sparrow 11 is a wonderful example of the Southeastern Community College instructor's **mixed media work**. This appealing 24 x 24-inch canvas piece combines drawing and acrylic painting techniques.



CATHELEEN GORDON

4

Baseball! You'll get **four tickets for a Cardinals game**, plus **one night's lodging** in St. Louis and a **gift box from The Ivy** to keep your strength up for the drive down. Donated by **Shottenkirk**.

5

Make your holidays memorable with this beautifully boxed “Twelve Days of Christmas” set of **champagne flutes** by Waterford Crystal, donated by **BFAL associate members**.

6

Splash into summer 2011 for a **pool party** hosted by **Lisa Walsh**. Bring your group of twenty people for an evening of fun, drinks, and appetizers. Dance to music provided by Burlington’s number-one DJ, **Brian Japsen**.

7

Enjoy a relaxing evening at **Catfish Bend Inn & Spa** with one night’s deluxe accommodations, breakfast included. For your delight, this wonderful package includes a \$50 **Yong’s** gift card, two free buffets at **Edgewater Grille**, a \$50 **Catfish Bend Casino** card, and a \$50 **FunCity** card, as well as a one-hour **massage**. Additionally, grab another couple and enjoy eighteen holes of golf for four at **Spirit Hollow** golf course. After your round of golf, go choose your **Shankapotomus** gear — the latest new fashion!

8

Come together for an evening of creativity, camaraderie, and **fun for eight at the Art Guild**. An on-site artist will lead you step-by-step as you paint your own one-of-a-kind masterpiece on canvas. Art materials will be provided — not to mention food, wine, beer, and soft drinks. *Date to be determined*. Donated by BFAL new members **Virginia Dupuis, Karine Elkhoury, Sara Schultz, Leah Prall, Khensa Bangert, Cheryl Krogull, and Connie McManis**.

9

Enjoy this once-in-a-lifetime family weekend in Chicago! Begin your **“Night at the Museum” weekend** by staying overnight at the Field Museum, where you’ll experience the **Egyptian exhibit** by flashlight, expand your knowledge, and doze with the dinosaurs! This will be a night of workshops, self-guided tours, and fun activities designed for families with children ages six through twelve. Then spend Saturday shopping, sightseeing, or swimming at the **Marriott on Michigan Avenue** (where your family will have overnight accommodations). Saturday evening, use your certificate from Lettuce Entertain You to choose from among twenty-five different downtown Chicago restaurants for a family dinner. Before you head home on Sunday, spend some time at the **Chicago Children’s Museum at Navy Pier**, where you’ll have a **one-year family membership**. (The museum has a reciprocal program with the Iowa City Children’s Museum, so you can enjoy time there as well.) *This is a package for two adults and two children. Sleepovers at the Field Museum begin at 5:45 on select Friday nights*. Donated by **Michelle Abou-Assaly, Wendy Bowen, Lindsay Fruehling, and Marie Luttenegger**.

10

Dazzle her with a signature blue box from legendary **Tiffany & Co.** that will contain a modern, woven stainless steel bracelet with a sterling silver charm as well as matching drop earrings — sure to be her favorites for years to come. These lovely items donated by **Deb Beach, Tammy Hayes, Rhonda Miller, Cindy Vavroch, and Nina Zaiser**.

11

Functional and beautiful, this **ceramic bowl** by GALA's featured artist, **John Bybee**, measures 5.25 inches tall and a generous 12.75 inches in diameter. The wheel-thrown bowl evinces the hand of the artist with its strong horizontal lines, and its complex glazing includes multiple colors of brown, ranging from tan to nearly black, as well as blue tones. The artist has incised his signature in the unglazed area under the bowl. *See pages 10 and 11 for more about the artist.*



JOHN BYBEE (DETAIL)

12

Chris Reed from **Great River Medical Center's High Performance** staff will safely design and implement three **personal training programs** to help you improve your fitness, health, or athletic skill level. The staff will scientifically measure your resting metabolism or resting energy expenditure over a 24-hour period, and you'll get pampered with a **30-minute massage**. *Expires July 31, 2011.* In addition, the **Happy Mutant** will donate your team's entrance fee for one of their four races in 2011.

13

Let your little girl and her friends get treated like princesses at a **pampering session** just for them. Six girls will enjoy a session with Natalie and Christa at **Bliss Salon**, where each girl will get her hair styled (adorable hair accessories included) and have her choice of a pedicure or manicure. The girls will also enjoy **lunch from the Ivy Bake Shoppe** and a one-hour **photography session with Memories by Brandi**. Six 5 x 7-inch photo prints are included. *Date of event to be negotiated.* Donated by **Jennifer Skelley and Kim Korschgen**.

14

Vibrancy and diversity characterize the work Burlington artist **Kent Kelly** has done over the last four decades, and his **mixed-media piece Aztec Football** — measuring 38.5 x 22 inches — is no exception. With paper as his primary medium, he colors, sculpts, and molds materials to create uniquely sophisticated works that are included in private and corporate collections in Iowa, Illinois, Colorado, and New York.

15

Need a great guy gift? Give him an eighteen-volt **Vulcan three-piece combo kit** that contains a cordless drill, a cordless circular saw, and a work light. The kit includes two batteries, a one-hour charger, drill bits, saw blades, and a storage bag, all donated by **Huffman's Farm and Home**. And if that's not enough to knock his socks off, the package also includes a **\$250 gift certificate** to be used at **Billups**, donated by Jon Billups. And the real topper — so to speak — is **three cubic yards of concrete from Ideal Ready-Mix Company**. Fabulous!

- 16** This high-resolution, 24 x 36-inch **photo by Ed Minard** captures an early-evening view that sweeps from downtown Burlington to the Great River Bridge and beyond. Professionally matted and framed by **Deb Bessine at The Medium**.



- 17** **La Tavola Italian Eatery** is offering a **“Taste of Sicily” evening. Chef Carlo Falcone** will select a special menu of dishes from his native country. Your guests will enjoy antipasto, salads, main dishes, and desserts. This offer for six also includes three bottles of Chianti. *Must be used on a Monday, Tuesday, or Wednesday evening.*

- 18** Get into spring with a **“Girls’ Night IN!”** Win your very own private **Saturday-night party of food, fashion, and fun**, for ten ladies. You’ll view new 2011 spring fashions and footwear and enjoy hors d’oeuvres and specialty desserts. Everyone will receive a gift from some of Melissa’s finest vendors: Franco Sarto, Vince, 5-2-5 America, Suzi Roher belts, Zatnu handbags, and more. It’s our gift to you, from **Melissa’s** in Westland Mall. Also for your special night, **Golden Eagle Distributing Corporation** has donated **wine** to help quench your thirst while you shop.

- 19** Imagine, a **clean car** for an entire year! First, Deery Brothers appearance center will treat your vehicle to a premium interior and exterior detail. Then keep the shine going with a car wash once a week at the Deery Brothers ultimate-action car wash. Donated by **Brad and Jeanne Deery**.

- 20** Enjoy a **wine tasting** for six hosted by **Dave and Deb Beach** at their home. Learn about wine from Hy-Vee wine and spirits manager **Tom Darnall** while dining on delicious appetizers. Afterwards, relax with a dip in the private hot tub. Provided by **Hy-Vee on Agency** and Dave and Deb Beach.

- 21** This beautifully crafted, lidded **vase by Lillian Rubin** features her signature hand-carved iris motif. The piece’s combination of shiny, metallic-glazed and smoky matte areas are a result of the raku reduction firing process.



22

Be a hero — and finish your holiday shopping in one fell swoop! From **Becker's Jewelers**: timeless elegance meets contemporary color in this **stunning necklace** designed by Sara Blaine. The sterling silver and 18-karat yellow gold, smokey quartz pendant enhancer is trimmed in a unique floral design with matching briolette cut. The faceted, smokey quartz station chain is a perfect match. And from **Petal Pushers**: an arrangement of **fresh flowers** every month for six months. *All six Petal Pushers deliveries must be to the same address and must be completed by November 2011.*



SARA BLAINE

23

Get fit and get ready for a healthy change of life with a **one-year family membership** to the **Burlington YMCA-YWCA**. This package also includes the Y's infamous **Body Makeover Challenge** for two people. Along with your Y package, enjoy **outdoor apparel** and a **free shoe consultation from Running Wild**.

24

Mangez-vous français? Our favorite downtown Burlington French restaurant, **Bistro 322**, offers a decadent **five-course meal** for four that includes three bottles of wine!

25

Entertain in style with this Waterford Crystal **ice bucket** and set of eight **Lis-more glasses**, donated by **BFAL associate members**.

26

Enjoy this beautiful **pastel painting** by one of the Burlington Fine Arts League's young scholarship recipients, **Autumn Rosario**. Autumn is working towards a bachelors degree in fine arts, and she specializes in fairy and folklore art. Her 12 x 18-inch *Will-o-the-Wisps* depicts spirits flitting between roots of an oak tree.



AUTUMN ROSARIO

27

Visit Iowa's capitol city! On May 7, 2011, you and a guest will attend a touring production of Mel Brook's Tony award-winning Broadway show **Young Frankenstein** at the **Civic Center of Greater Des Moines**, and you'll have a one-night stay at the **Embassy Suites** located near the city's trendy East Village shopping and dining. Donated by BFAL associate member **Nancy Paul and BFAL members**.

28

Giddy up! Five couples will gather for the 137th running of the **Kentucky Derby** at the home of **Brad and Crystal Bivens**, co-hosted by **Gina and Jeff Crabtree, Sara and Ryan Hecox, and Stephe and Steve Libben**. Kentucky Derby cocktails — mint juleps! — will be served, along with scrumptious appetizers. Wear your finest attire; hats are a must! *The party will be held on May 7, 2011.*

29

Take a break at your **Iowa State Fair 2011** with this mini vacation package. Whether you're a beginner or an experienced fair attendee, you can kick back with a corn dog and enjoy the fair. The package includes one night's accommodations, a pair of grandstand tickets, "Wine 'n' Prime" at the Cattleman's Beef Quarters, and admission and attraction tickets. Dates for the 2011 fair in Des Moines are August 11 through 21; the date for your trip will be arranged with the sellers. Donated by **Terry Johnson, Becky Rump, Judy Shotwell, and Jan Wolbers**.

30

So far in 2010, **James Walker Henry** has been a featured artist at the Fort Madison Area Art Association — his one-man show, *Surreal Diary*, was an early highlight for that organization's new space — and his work was included in this year's juried Rock Island Fine Arts Exhibition and in a group show at the Andrews Art Museum in North Carolina. In *Burlington*, a **48 x 60-inch oil painting**, our hometown surrealist lays out a bird's-eye view of downtown and the Mississippi River.

31

Go, Hawks! It's opening game day, **Iowa Hawkeye football** 2011 season, and you and a guest will be pampered while you watch the game in a **sky-box suite** generously donated by **Randy Winegard**. While in Iowa City, treat yourself and friends to **Graze** with a \$100 gift certificate. Included in the package are a complimentary **Food Guru's Cookbook and a Martini's Martinis video cookbook**.

BFAL OFFICERS, 2010–11

Ann Reynolds Erts, *president*

Terry Johnson, *treasurer*

Colette King, *secretary*

Ann Peters, *corresponding secretary*

Michelle AbouAssaly, *past president*



GALA 2010 GENERAL CO-CHAIRS

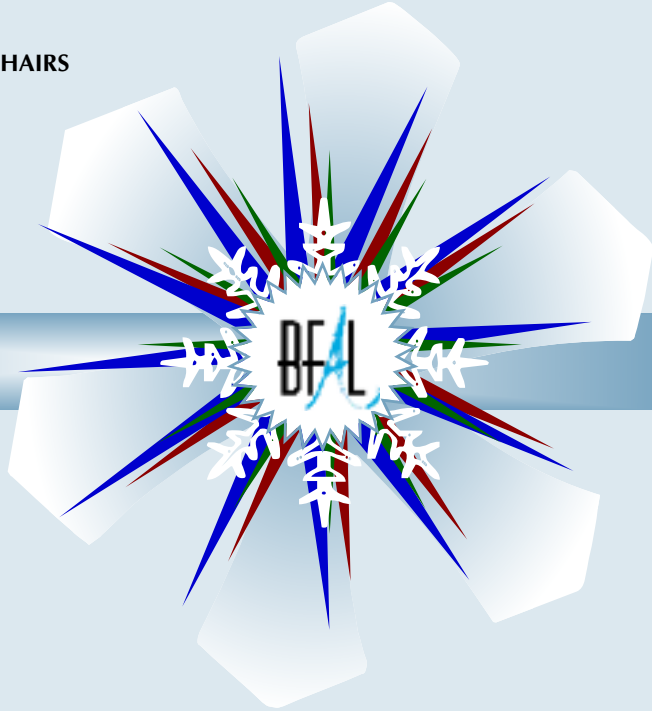
Deb Beach

Stephie Libben

Nina Zaiser

Lori Denney, *advisor*

Becky Rump, *advisor*



To contact the Burlington Fine Arts League:

- *Contact any BFAL member.*
- *Click on the link at burlingtonfineartsleague.com.*
- *Write to P.O. Box 243, Burlington, Iowa 52601.*